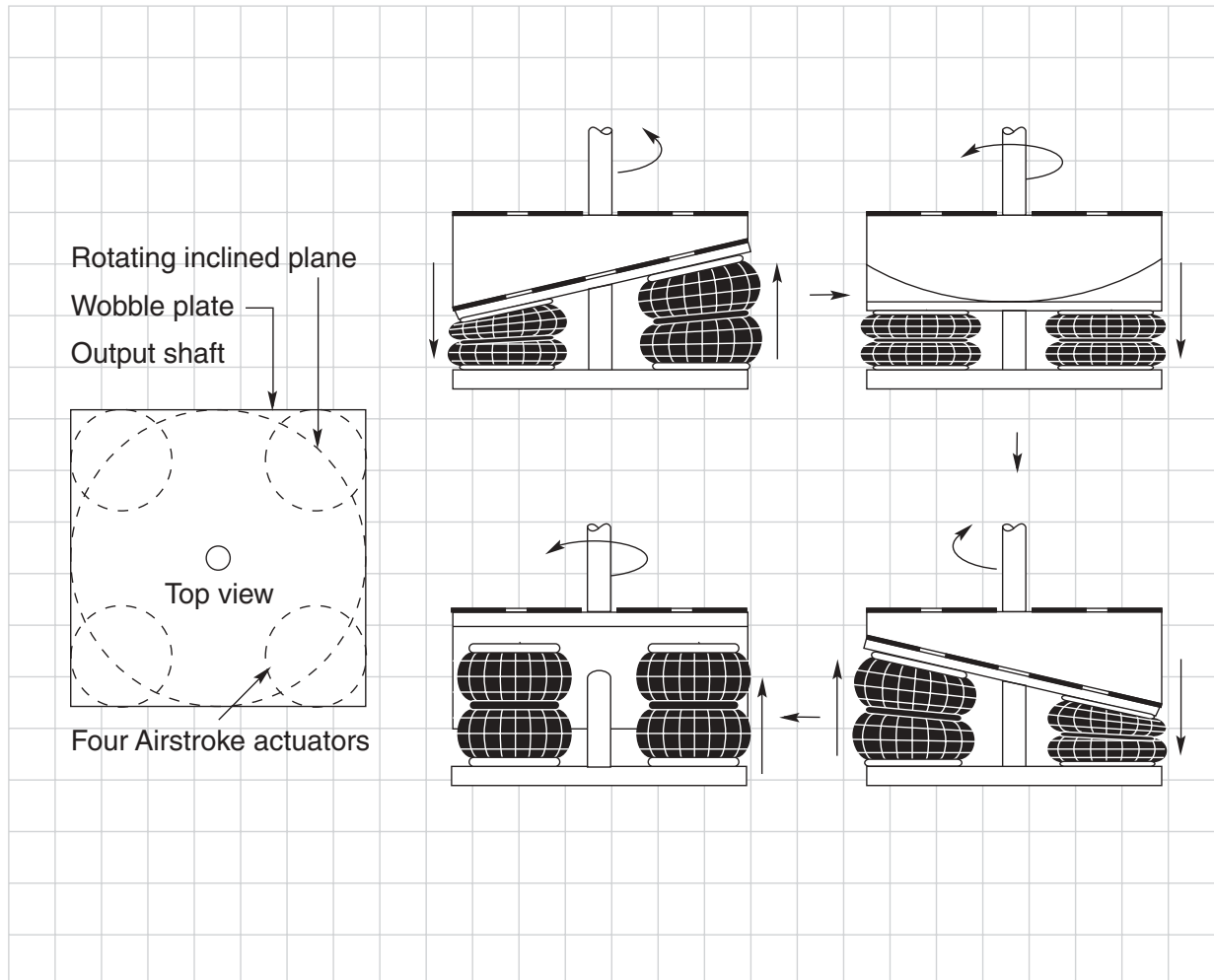


### Swash Plate Motor



#### **Problem**

Develop a reliable and low maintenance swash plate motor.

#### **Solution**

Four Airstroke actuators are sequentially activated, causing the wobble plate to precess about its support and to bear against the inclined face of the plate above to force it to rotate.

#### **Benefit**

The actuators provide reliable operation while being impervious to moisture, frequently prevalent in swash motor environments. Air springs are virtually maintenance-free, with no internal seals to wear and can operate directly without a clevis to wear out.